








sheet system

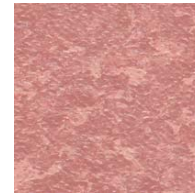
geo tx

- Sheets and tiles
- Suitable for heavy traffic areas
- Extreme durability
- Textured or matt surface finish
- Low VOC certified material
- CA 01350 compliant
- May contribute with points to LEED program
- Free of PVC and halogens
- Cigarette burn resistant
- 18 colors

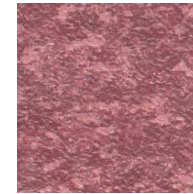
rubber flooring for heavy traffic areas, with textured surface and a sober tone on tone granules design



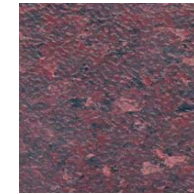
Art.				
2115-01		50 x 50 cm	20 units	
2115-02	 2.0 mm	61 x 61 cm	20 units	3.6 kg/m ²
2115-03	Homogeneous	1.12 x 12 m≅	1 sheet	
2115-35		50 x 50 cm	20 units	
2115-36	 3.0 mm	61 x 61 cm	20 units	5.1 kg/m ²
2115-37	Homogeneous	1.12 x 12 m≅	1 sheet	
2115-28		50 x 50 cm	20 units	
2115-29	 3.0 mm	61 x 61 cm	20 units	5.1 kg/m ²
2115-30	Double backing	1.00 x 12 m≅	1 sheet	



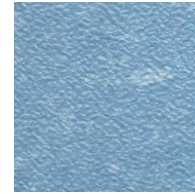
0411 | ISLANDIA



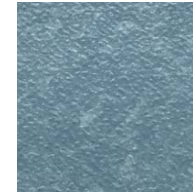
0403 | ANTILLA



0410 | TROPICO



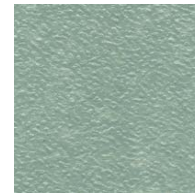
0409 | DANUBIO



0418 | ATLANTICO



0406 | BIRMANIA



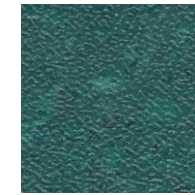
0415 | NORMANDIA



0414 | NILO



0413 | JAVA



0402 | AMAZONAS



0407 | ARABIA



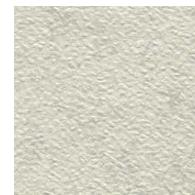
0416 | SAHARA



0412 | TIBET



0404 | ARIZONA



0401 | ALASKA



0405 | ARTICO



0417 | SIBERIA



0419 | TERRANOVA